

Product Specification Sheet

FC4

Fire Curtain with up to 2-hour Fire Resistance Approval to British and European Standards

KEY SPECIFICATIONS

Headbox	1.2mm galvanized mild steel with 2mm end caps
Rollers	76mm coated mild steel tube
Motors	24V DC, 3100 RPM
Fabric	V4A
Bottom Bar	20mm x 20mm - 20mm x 40mm mild steel
Side Guides	100 x 50 rolled steel
Electronics	See separate spec sheet



STANDARDS

Tested and approved to British and European Standards.

- BS EN 1634 - Part 1 : Fire resistance test for door and shutter assemblies and openable windows.

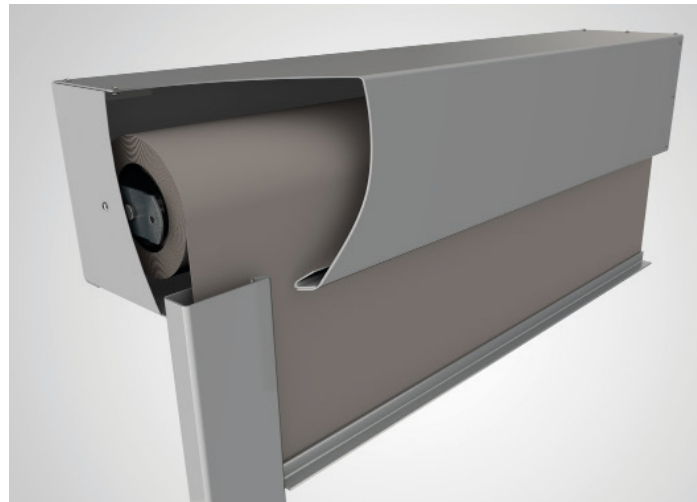
DESIGNATIONS & SIZE LIMITATIONS

Model	Max Width (m)	Max Drop (m)	Fire Resistance (mins)		Product Standard	Certificate / Reports
			Integrity (E)	Irradiance (W)		
Single Roller	2.6	2.7	120	120	BSEN 1634-1	WF341904 WF342381
	7.0	4.0	60	60		WF349970

HEADBOX SIZES

The size of the curtain roller housing (headbox), depends on the curtain drop and width. The tables below give details of the full range of standard headbox sizes for the FC4 fire curtains.

Smaller width curtains may have the option of being installed in FC2 single headbox sizes.



Type A		
	Single Roller (76mm)	Single Roller (127mm)
	Curtain Width	
Curtain Drop	Up to 5.0m	5.0m - 7.0m
< 4m	210x210mm	235x255mm

WARRANTY

A manufacturer's warranty is provided for a period of one year. Exclusions may apply if any element is sublet to an unauthorised party.